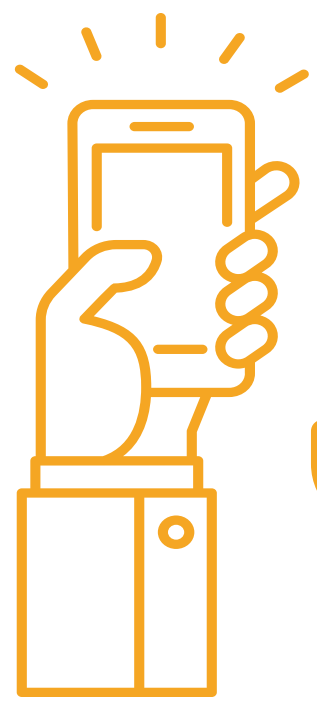


2015 Year in Review



1,513,268
Calls From Citizens

845,526

Police/Citizen Interactions



Contacts are created any time JSO officers interact with a citizen, whether called to a scene OR an individual officer comes upon a scene requiring further investigation (on-view).

498,727

Dispatched
Calls



346,799

Officer
On-View



39,890 Arrests

Arrests were made in 4.71% of all Police/Citizen Interactions completed.
(1 in 24 per capita)



343 Response to Resistance
Incidents (RTR)

Force was used in 0.41% of Police/Citizen Interactions and
in .86% of all Arrests made.
(1 in 2,700 per capita)



10 Officer Involved Shootings of Suspects (OIS)

0.001% of all Police/Citizen Interactions involved OIS incidents.
0.03% of all Arrests made included OIS incidents.
2.9% of all RTR Incidents involved OIS incidents.
(1 in 92,626 per capita)

Response to Resistance Incident (RTR): The incident which involves an application of force.

Use of Force: The actual application of force whereby an officer utilizes a within-policy maneuver and/or technique to establish control of the subject(s).

Methods of Use of Force include: Taser / Physical / Chemical / Impact / Firearm